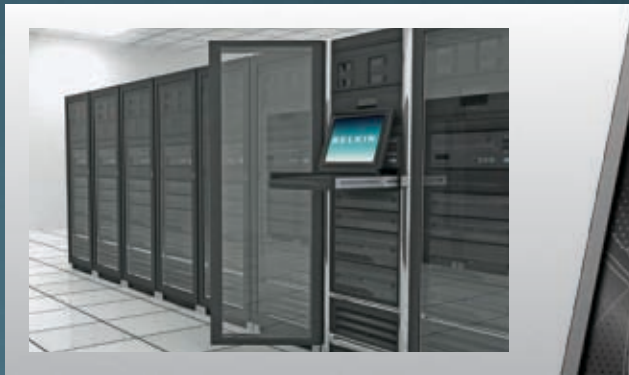


# BELKIN® 19-INCH WIDESCREEN RACK CONSOLE

Slim design. **Knockout** performance.



**BELKIN®**

## THE CHALLENGE

---

IT administrators responsible for installations are often understaffed and overworked, and many operate within the confines of a strict budget. In order to service their systems, these administrators have often relied on large, less-efficient consoles with limited features, cumbersome configurations, and difficult installation processes.

## THE SOLUTION

---

The Belkin 19-inch Widescreen Rack Console offers an innovative new design that simplifies your IT duties at every turn. The often-cumbersome installation process has been reduced to a hassle-free, one-person job—simply slide it in, and you're done. Belkin 19-inch Widescreen Rack Consoles are lighter and slimmer than ever before, and deliver **simplified deployment**, **instant access**, and **reduced energy usage**. And with the ultra-slim 19-inch widescreen display, you'll enjoy a more comfortable viewing area while saving valuable rack space. Belkin 19-inch Widescreen Rack Consoles are just another way Belkin enables you to successfully simplify your IT responsibilities.



### Slim, Sleek Design

## ENHANCED VIEWING AREA

---

The Belkin 19-inch Widescreen Rack Console helps IT administrators view more and do more, improving efficiency and productivity. Its high-resolution LCD provides a clear, wide viewing area ideal for performing several tasks simultaneously, including:

- Viewing multiple applications at once
- Servicing multiple virtual servers
- Viewing multiple documents side by side
- Using applications that require a larger viewing space

## COMPACT DESIGN

---

Server room closets tend to be limited on space—that's why our newest rackmount console solution is lighter, slimmer, and more integrated than ever before. Belkin 19-inch Widescreen Rack Consoles accommodate your keyboard, touchpad, monitor, and KVM switch within a 1U rack, saving you valuable rack space for your other IT equipment.



**Product designed in California.**

---

# Simple, Functional Access

## HASSLE-FREE INSTALLATION

You can trust Belkin to help you get your job done—faster and simpler. Belkin 19-inch Widescreen Rack Consoles install in a fraction of the time and effort as other rackmount consoles, thanks to hassle-free innovations such as screwless rail design, adjustable rails, and a lighter, slimmer build. It's also compatible with multiple cabinet and system configurations, and does not require a bracket configuration.



*Belkin's high-performance rails do not require any additional release springs, providing IT administrators with a truly hassle-free operation.*



## TROUBLE-FREE ACCESS

Belkin 19-inch Widescreen Rack Consoles are designed to make your day-to-day tasks easier. Features such as a user-friendly interface and automatic locks rather than manual triggers for tucking the product away work together to ensure an easier, more comfortable IT experience. You'll also experience seamless access through an easy-to-grip handle that fits virtually anyone.

# Efficient Energy Use

## ENERGY REDUCTION

Belkin is committed to delivering environmentally friendly, user-friendly IT products—and the newest addition to the lineup, the ENERGY STAR® qualified Belkin 19-inch Widescreen Rack Console, is no exception. In fact, it's the first rackmount console to receive ENERGY STAR compliance, allowing you to lessen your impact on both the environment and your energy bill.



# Belkin 19-inch Widescreen Rack Console Lineup

Part Number	Product Description	Supported CPUs	KVM Compatibility
F1DC101H	19-inch Widescreen LCD Rack Console	1	Yes
F1DC108H	19-inch Widescreen LCD Rack Console with 8-Port KVM	8	Built in
F1DC116H	19-inch Widescreen LCD Rack Console with 16-Port KVM	16	Built in

## TAA Products

Part Number	Product Description	Supported CPUs	KVM Compatibility
F1DC101H	19-inch Widescreen LCD Rack Console	1	Yes
F1DC108H	19-inch Widescreen LCD Rack Console with 8-Port KVM	8	Built in
F1DC116H	19-inch Widescreen LCD Rack Console with 16-Port KVM	16	Built in



## KVM Cables

Part Number	Product Description
F1D9400-06	OmniView Dual-Port Cable, PS/2 & VGA (6 ft.)
F1D9400-10	OmniView Dual-Port Cable, PS/2 & VGA
F1D9400-15	OmniView Dual-Port Cable, PS/2 & VGA
F1D9400-25	OmniView Dual-Port Cable, PS/2 & VGA
F1D9401-06	OmniView Dual-Port Cable, USB & VGA (6 ft.)

Part Number	Product Description
F1D9401-12	OmniView Dual-Port Cable, USB & VGA (12 ft.)
F1D108-CBL	OmniView PRO Series Daisy-Chain Cable (2 ft.)
F1D108-CBL-06	OmniView PRO Series Daisy-Chain Cable (6 ft.)
F1D108-CBL-10	OmniView PRO Series Daisy-Chain Cable (10 ft.)
F1D108-CBL-15	OmniView PRO Series Daisy-Chain Cable (15 ft.)

**Belkin International, Inc.**  
 12045 E. Waterfront Drive  
 Playa Vista, CA 90094

800-223-5546  
[www.belkin.com](http://www.belkin.com)

© 2011 Belkin International, Inc.

**BELKIN®**